

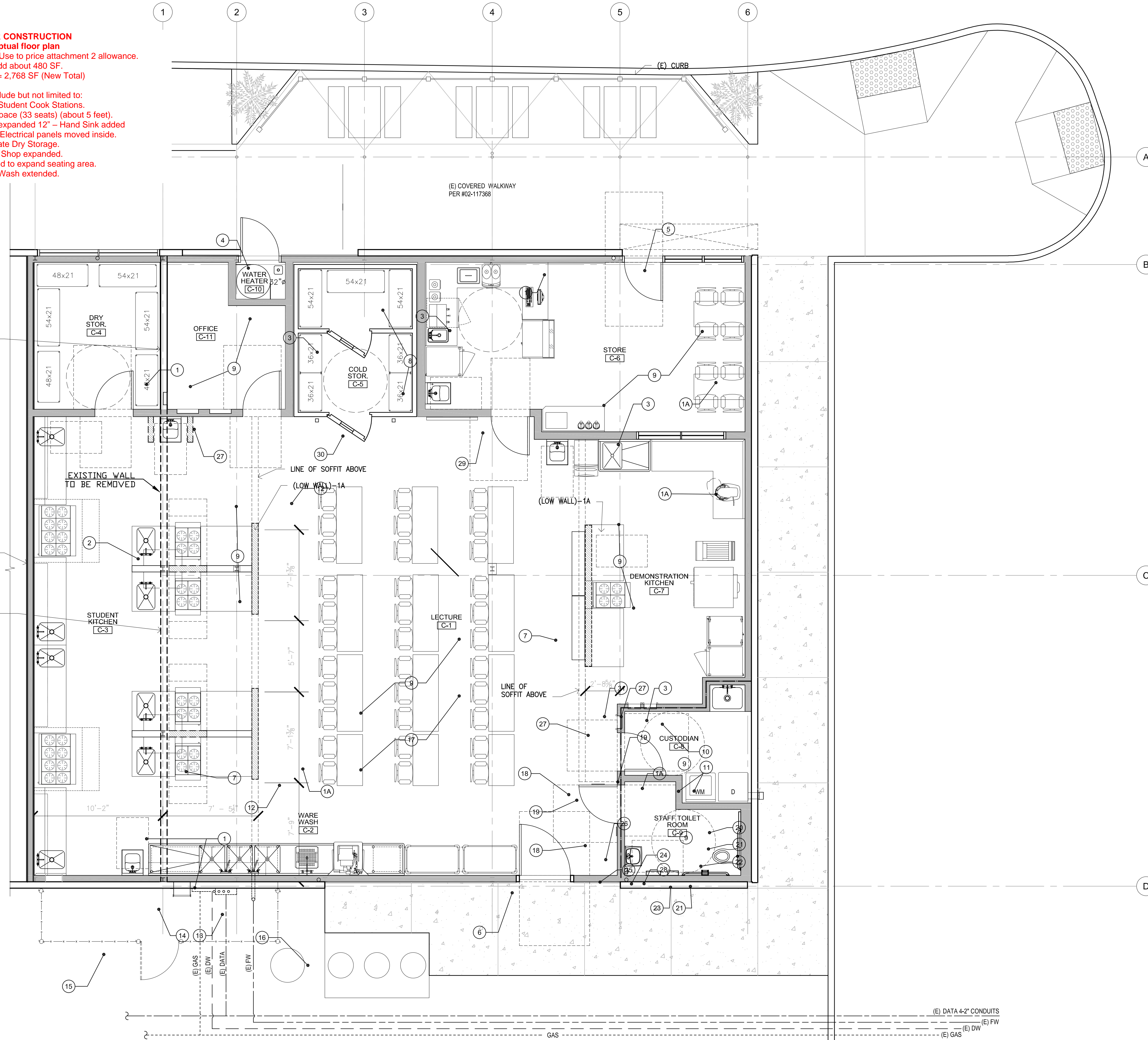
NOT FOR CONSTRUCTION
Conceptual floor plan
 For pricing purposes only. Use to price attachment 2 allowance.
 Total add about 480 SF.
 2,288 + 480 = 2,768 SF (New Total)

Changes include but not limited to:
 2 additional Student Cook Stations.
 Expanded Lecture Space (33 seats) (about 5 feet).
 Demonstration Kitchen expanded 12" - Hand Sink added
 Office Space added / Electrical panels moved inside.
 Separate Dry Storage.
 Student Shop expanded.
 Entry door moved to expand seating area.
 Ware Wash extended.

(E) WALL TO REMAIN,
 REMOVE GYP. BD. AS
 REQUIRED FOR NEW
 SHEAR WALL AND
 UTILITIES

PROVIDE 2 HOUR
 FIRE RATED
 PARTITION

(E) WALL TO
 BE REMOVED



KEYNOTES

- 1 (N) 4" STEEL STUDS @ 16" O.C. WITH 5/8" GYP BOARD EACH OR ONE SIDE. TAPED, TEXTURED AND PAINTED WHERE EXPOSED - SEE A5.10
- 1A (N) 6"x 16 GA STEEL STUDS @ 16" O.C. w/ 5/8" GYP BOARD EACH OR ONE SIDE. TAPED, TEXTURED AND PAINTED WHERE EXPOSED - SEE A5.10
- 2 (N) 2-HOUR FIRE BARRIER ASSEMBLY - SEE A5.10
- 3 (N) 1-HOUR FIRE BARRIER WALL - SEE A5.10
- 4 INFILL (E) EXTERIOR OPENING w/ 4" STEEL STUDS @ 16" O.C., 6" HIGH CONCRETE CURB, 1/2" PLY SHEATHING w/ 8d @ 6" EDGES AND 8d @ 12" FIELD. BLOCK ALL EDGES. THREE COAT CEMENT PLASTER EXTERIOR AND 5/8" GYP BOARD INTERIOR. 07 21 00 - INSTALL R-19 INSULATION. SEE W4/ A5.10 - 1 HOUR RATED EXTERIOR INFILL WALL
- 5 08 41 10 - INSTALL (N) ALUMINUM STOREFRONT ENTRY ASSEMBLY w/ INSULATED GLASS - SEE A6.10
- 6 08 11 00 - INSTALL (N) HM DOOR AND FRAME - SEE A6.10
- 7 INSTALL (N) FOOD SERVICES EQUIPMENT. SEE FOOD SERVICES DWGS
- 8 INSTALL (N) WALK-IN FREEZER/REFRIGERATOR UNIT. SEE FOOD SERVICES DWGS
- 9 09 96 56 - GRIND CONCRETE SLAB SMOOTH. INSTALL EPOXY FLOOR COATING SYSTEM WITH 6" INTEGRAL COVERED BASE. COLOR SELECTED FROM STANDARD PALLET
- 10 09 64 00 - INSTALL FRP WALL PANELS - SEE A6.10 COLOR SELECTED FROM STANDARD PALLET.
- 11 INSTALL (N) WASHER AND DRYER UNITS. VENT DRYER TO EXTERIOR - SEE PLUMBING/MECHANICAL DWGS
- 12 INSTALL (N) PLUMBING FIXTURES - SEE 2/ A3.10 FOR CLEARANCE DIMENSIONS - SEE PLUMBING DWGS
- 13 INSTALL (N) 3" Ø FIRE RISER - SEE AFSS DWGS
- 14 INSTALL (N) ROOF ACCESS LADDER. SEE PARTIAL SECTION DWG 3/ A3.20 AND PLAN DETAIL 2/ A5.30
- 15 INSTALL (N) 7'-0" HIGH CHAINLINK SECURITY FENCE WITH MANGATE - SEE DETAIL 6 & 7/ A5.60
- 16 (N) GREASE TRAP - SEE FOOD SERVICES/PLUMBING DWGS
- 17 (N) 4" THICK REINF CONC SLAB
- 18 (N) RESTROOM DOOR SIGNAGE SYMBOL - SEE 1/ A5.10
- 19 (N) SOLID CORE WOOD DOOR - SEE A6.10
- 20 (N) TOILET SEAT COVER DISPENSER. OFCI
- 21 (N) GRAB BARS. CFCI
- 22 (N) WALL HUNG WATER CLOSET - SEE 4/ A3.10
- 23 (N) TOILET PAPER DISPENSER. OFCI
- 24 (N) PAPER TOWEL DISPENSER. OFCI
- 25 (N) SOAP DISPENSER. OFCI
- 26 (N) LAVATORY SEE 4/ A3.10
- 27 (N) MULTI-PURPOSE DRY CHEMICAL TYPE: UL-RATED 2A FIRE EXTINGUISHER @ RECESSED RATED CABINET. SEE ALSO 2/ A5.60 AND SPECIFICATIONS.
- 28 (N) SURFACED-MOUNTED SANITARY NAPKIN DISPOSAL. OFCI
- 29 (N) 4'-0"x4'-0" WHITE BOARD w/ TRAY PEN. SEE 8/ A5.40 FOR BACKING PLATE. ATTACH w/ #14 SMS, T & B, @ 16" O.C.
- 30 HSS 3 x 3 x 1/4" BOLLARD TYP. OF 2; COORD LOCATION SEE ALSO 10/ A5.30
- 31 WET CHEMICAL TYPE: UL-RATED 2A FIRE EXTINGUISHER @ RECESSED RATED CABINET. SEE ALSO 2/ A5.60 AND SPECIFICATIONS.

LEGEND

- 1-HR FIRE BARRIER
- 2-HR FIRE BARRIER
- F.O.S. FACE OF STUD
- F.O.CP FACE OF CONC. PANEL
- SEE FOOD SERVICES

DSA STAMP

DERIVI CASTELLANOS ARCHITECTS

 Central Valley
 3031 W. March Ln, Suite 334
 Stockton, CA 95219
 (209) 462-2873
 www.dcaia.com
 Silicon Valley
 95 S Market St, Suite 480
 San Jose, CA 95113
 (408) 320-4871

Professional Seals



**NEVADA JOINT UNION
 HIGH SCHOOL DISTRICT**
**NEVADA UNION HIGH SCHOOL
 CLASSROOM MODERNIZATION
 CTE - CULINARY ARTS**
 11761 RIDGE ROAD
 GRASS VALLEY, CA 95945

SHEET TITLE:

SCALE:

REVISIONS

No.	Issue Description	Date

Drawn By:

Checked By:

JOB NO.

19.010

SHEET NUMBER

DATE